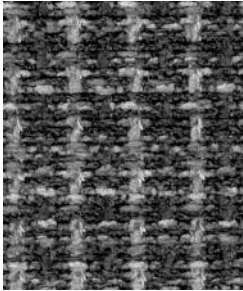

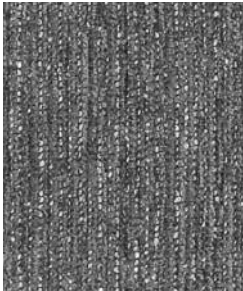



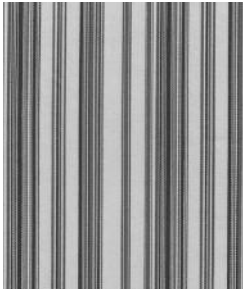

HBF Textiles

Name	Specifications	Number/Color	Number/Color
ROUGH TERRAIN	 <p>Width: 54" Repeat: 4 1/4"V x 1/2"H Content: 51% Bamboo, 49% Rayon (rapidly renewable content) Yarn Dyed Weight: 25.90 Ounces Per Linear Yard Backing: Light Acrylic Primary Use: Upholstery Abrasion: 99,000 (Wyzenbeck) FR Rating: California Tech. Bulletin 117 Cleaning Code: S Country of Origin: United States Designer: Campion Platt</p> <p></p>	<p>Net Price: \$75.00</p> <p>878-11 Birch 878-22 Glow 878-45 Nectar 878-60 Fern 878-64 Rain 878-70 Thistle</p>	
Environmental:		This product is a part of HBF Textiles' Environmental Initiatives Program	



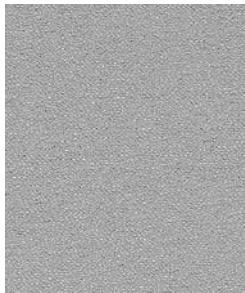

ROYAL PLUSH	 <p>Width: 54" Content: 100% Polyester Yarn Dyed Weight: 21.60 Ounces Per Linear Yard Finish: Crypton® Backing: Light Acrylic Primary Use: Upholstery Abrasion: 100,000 (Wyzenbeck) FR Rating: California Tech. Bulletin 117 Cleaning Code: W Country of Origin: United States Designer: Tracey Reinberg</p> <p></p>	<p>Net Price: \$57.00</p> <p>836-11 Bone 836-16 Boggy 836-20 Sand 836-36 Reggine 836-37 Mushroom 836-39 Tufo 836-44 Robust 836-56 Gulf 836-58 Ozone 836-61 Bottle 836-63 Grasshopper 836-74 Veritas 836-83 Fumo</p>	
-------------	---	--	--



SAVILE ROW STRIPE	 <p>Width: 54" Repeat: 4 4/5" H Content: 100% Lambswool (rapidly renewable content) Yarn Dyed Weight: 17.00 Ounces Per Linear Yard Primary Use: Upholstery Abrasion: 36,000 (Wyzenbeck) FR Rating: California Tech. Bulletin 117 Cleaning Code: S Country of Origin: England Designer: Barbara Barry</p> <p></p>	<p>Net Price: \$86.00</p> <p>686-25 London Fog 686-62 Boxwood 686-77 Oxblood 686-82 Thames</p>	<p>Discounted Net Price: \$43.00</p> <p>686-18 Camel Hair 686-33 English Cherry</p>
Environmental:		This product is a part of HBF Textiles' Environmental Initiatives Program	



HBF Textiles

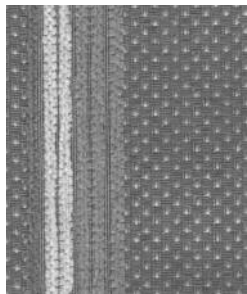
Name	Specifications	Number/Color	Number/Color
S H E E P I S H 	Width: 54"	Net Price:	Discounted Net Price: \$22.50
	Content: 100% Recycled Polyester (4% post-consumer, 96% pre-consumer) Piece Dyed	\$45.00 829-85 Grey Bark	
	Weight: 19.00 Ounces Per Linear Yard		829-16 Thatch
	Primary Use: Upholstery		829-18 Mushroom
	Abrasion: 99,000 (Wyzenbeek)		829-20 Wheat
	FR Rating: California Tech. Bulletin 117		829-22 Maize
	Cleaning Code: WS		829-39 Dark Walnut
	Country of Origin: Canada		829-40 Pomegranate
	Designer: Marilyn Geller		829-45 Chili Pepper
			829-46 Firethorn
			829-54 Night Shade
			829-56 Spruce
			829-57 Delphinium
			829-62 Spring Grass
			829-66 Green Lentil
			829-90 Ebony

Environmental: This product is a part of HBF Textiles' Environmental Initiatives Program




Note: Natural variations are inherent in the face of this fabric.

SHORELINE STRIPE



Fabric Shown Railroaded



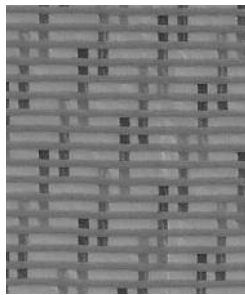
Width: 57"	Net Price:	
Repeat: 2 3/4"V	\$39.00	
Content: 63% Recycled Polyester, 22% Polyester, 9% Rayon, 6% Cotton (13% post-consumer, 50% pre-consumer) Yarn Dyed	882-16 Gravel	
	882-23 Sand	
	882-45 Copper	
	882-63 Moss	
	882-75 Wildberries	
Weight: 16.48 Ounces Per Linear Yard		Large Scale Pattern
Finish: Crypton® Green		
Primary Use: Upholstery		
Abrasion: 100,000 (Wyzenbeek)		
FR Rating: California Tech. Bulletin 117 NFPA 260 (UFAC) Class 1		
Cleaning Code: WS		
Country of Origin: United States		
Designer: Mary Jo Miller		
		


Environmental: Crypton® Green is SCS Indoor Air Advantage™ Gold Certified.
Crypton® Green is Silver Cradle to Cradle™ Certified by MBDC.
Powered by Renewable Energy, and has Superior Formulations for Stain, Moisture, Bacteria and Odor Resistance.
This product is a part of HBF Textiles' Environmental Initiatives Program



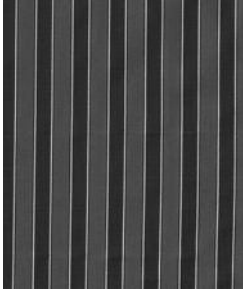

Note: Subtle color variations are inherent in the face of this fabric.

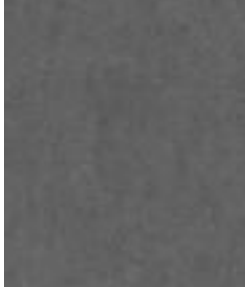

SHUTTER SPEED

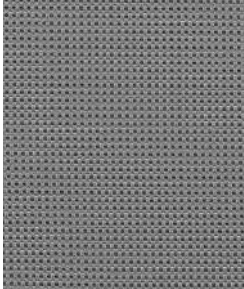



Width: 54"	Net Price:	Discounted Net Price: \$27.50
Repeat: 4 3/4"V x 2 1/2"H	\$55.00	
Content: 67% Polyester, 33% Cotton, Yarn Dyed	811-23 Sand	811-25 Glow
	811-47 Terra	811-54 Ocean
Weight: 15.80 Ounces Per Linear Yard	811-63 Burnish	811-66 Chiffon
Finish: Crypton®	811-74 Piquant	811-71 Orchid
Primary Use: Upholstery	811-77 Fig	811-87 Mushroom
Abrasion: 75,000 (Wyzenbeek)	811-81 Stainless	
FR Rating: California Tech. Bulletin 117		
Cleaning Code: W		
Country of Origin: United States		
Designer: Tracey Reinberg		
		

HBF Textiles

Name	Specifications	Number/Color	Number/Color
SILK STRIPE 	Width: 54" Repeat: 7/8"V Content: 83% Polyester, 17% Silk Yarn Dyed Weight: 6.08 Ounces Per Linear Yard Backing: Light Acrylic Finish: Stain Resistant Primary Use: Upholstery Abrasion: 51,000 (Wyzenbeek) FR Rating: California Tech. Bulletin 117 Cleaning Code: S Country of Origin: United States Designer: Barbara Barry 	Net Price: \$60.00 851-11 Ostrich Egg 851-39 Darjeeling 851-61 Green Tea 851-64 Mercury Glass	Discounted Net Price: \$30.00 851-20 Parchment 851-37 Malted 851-46 Lacquer
	Fabric Shown Railroaded Note: Slight variations in the faille weave are inherent in the face of this fabric.		

SOLID COMFORT 	Width: 54" Content: 72% Polyester, 28% Cotton Piece Dyed Weight: 16.00 Ounces Per Linear Yard Finish: Stain Resistant Primary Use: Upholstery Abrasion: 150,000 (Wyzenbeek) FR Rating: California Tech. Bulletin 117 NFPA 260 (UFAC) Class 1 Cleaning Code: S Country of Origin: Mexico 	Net Price: \$30.50 852-10 French Soap 852-11 Twine 852-16 Murmur 852-20 Honey Bear 852-23 Bambi 852-25 Prairie 852-34 Toast 852-35 Cuddle 852-37 Hamster 852-39 Teddy Bear 852-44 Fiesta 852-46 Red Clay 852-54 Duck Teal 852-61 Thistle 852-62 Old Moss 852-63 Pond Scum 852-77 Plum Jam 852-81 Fog 852-84 Potter's Clay	
	Note: Slight color variations are inherent in this fabric. Additional colors available, please contact HBF Textiles Customer Service.		

SPANISH GROVE 	Width: 54" Content: 100% Recycled Polyester (12% post-consumer, 88% pre-consumer) Yarn Dyed Weight: 13.92 Ounces Per Linear Yard Primary Use: Upholstery, Upholstered Walls Abrasion: 60,000 (Wyzenbeek-Wire Mesh) FR Rating: California Tech. Bulletin 117 ASTM E-84 Unadhered (Class A) Cleaning Code: S Country of Origin: United States Designer: Mary Jo Miller 	Net Price: \$32.00 826-20 Pecan 826-35 Walnut 826-59 Black Plum 826-90 Kalamata	Discounted Net Price: \$16.00 826-22 Apricot 826-43 Pomegranate 826-46 Orange 826-56 Bayberry 826-63 Pear 826-70 Fig
	Environmental: This product is a part of HBF Textiles' Environmental Initiatives Program		



HBF Textiles

Name Specifications Number/Color Number/Color

SPELLBOUND



Width: 54"
 Repeat: 5 1/4"V x 4 1/2"H
 Content: 47% Organic Cotton, 42% Bamboo
 7% Hemp, 4% Polyester
 (rapidly renewable content)
 Yarn Dyed
 Weight: 21.44 Ounces Per Linear Yard
 Finish: GreenShield®
 Primary Use: Upholstery
 Abrasion: 48,000 (Wyzenbeek)
 FR Rating: California Tech. Bulletin 117
 Cleaning Code: S
 Country of Origin: United States
 Designer: Marilyn Geller

Net Price:
\$53.00
873-10 Ghost Dance
873-28 Candlelight
873-30 Copper Cauldron
873-39 Evening Dusk
873-43 Torch
873-60 Nettle
873-81 Silver Lining
873-90 Trance

Environmental: Energy used during the weaving of this fabric produced by 100% wind power
 Fabric is 100% biodegradable
 This product is a part of HBF Textiles' Environmental Initiatives Program



Note: Natural variations are inherent in the face of this fabric

s p u n



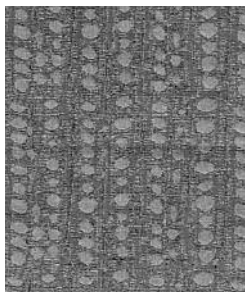
Width: 54"
 Repeat: 6 5/8"V x 6 3/4"H
 Content: 42% Polyester, 39% Rayon,
 19% Cotton
 Yarn Dyed
 Weight: 13.00 Ounces Per Linear Yard
 Primary Use: Upholstery
 Abrasion: 54,000 (Wyzenbeek)
 FR Rating: California Tech. Bulletin 117
 Cleaning Code: S
 Country of Origin: United States
 Designer: tvs interiors

Net Price:
\$32.00
678-20 tanned
678-22 scrambled
678-39 binge
678-41 tickled

Discounted Net Price:
\$16.00
678-44 smooch
678-59 blot
678-62 barefoot



S T A C C A T O



Width: 54"
 Repeat: 5 1/2"V x 7"H
 Content: 46% Polyester, 27% Cotton, 27% Rayon
 Yarn Dyed
 Weight: 16.00 Ounces Per Linear Yard
 Primary Use: Upholstery
 Abrasion: 42,000 (Wyzenbeek)
 FR Rating: California Tech. Bulletin 117
 Cleaning Code: S
 Country of Origin: United States
 Designer: Mary Jo Miller

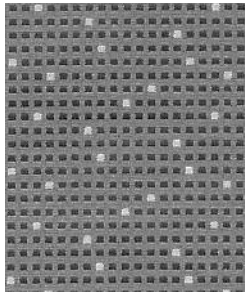
Net Price:
\$34.00
654-20 Cammello
654-23 Caffè
654-34 Pietra
654-44 Rosso
654-71 Lago
654-77 Viola



HBF Textiles

Name Specifications Number/Color Number/Color

STRAIGHT FORWARD



Width: 58"
 Repeat: 3 5/8"V x 2 1/4"H
 Content: 100% Recycled Polyester
 (9% post-consumer, 91% pre-consumer)
 Yarn Dyed
 Weight: 14.35 Ounces Per Linear Yard
 Primary Use: Upholstery, Upholstered Walls
 Abrasion: 100,000 (Wyzenbeek-Wire Mesh)
 FR Rating: California Tech. Bulletin 117
 ASTM E-84 Unadhered (Class A)
 Cleaning Code: S
 Country of Origin: United States
 Designer: Marilyn Geller

Net Price:
\$36.00

830-16 Thatch
830-20 Wheat
830-25 Goldenrod
830-45 Pumpkin
830-63 Maize
830-66 Bronze Lentil
830-78 Poplar Bark

Discounted Net Price:
\$18.00

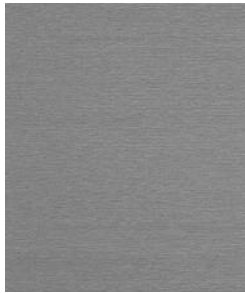
830-40 Pomegranate
830-46 Firethorn
830-54 Night Shade
830-57 Delphinium



Environmental: This product is a part of HBF Textiles' Environmental Initiatives Program



STRAIGHT PLUSH



Width: 54"
 Content: 60% Polyester, 40% Cotton,
 Yarn Dyed
 Weight: 19.68 Ounces Per Linear Yard
 Finish: Crypton®
 Primary Use: Upholstery
 Abrasion: 50,000 (Wyzenbeek)
 FR Rating: California Tech. Bulletin 117
 Cleaning Code: W
 Country of Origin: United States
 Designer: Tracey Reinberg

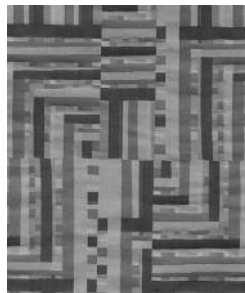
Net Price:
\$47.00

855-12 Buff
855-16 Boggy
855-20 Sand
855-23 Bronze
855-34 Bark
855-39 Tufo
855-66 Lichen



 CRYPTON® Super Fabrics

T A P E



Width: 54"
 Repeat: 18"V x 13 1/2"H
 Content: 46% Cotton, 35% Nylon,
 19% Polyester
 (rapidly renewable content)
 Yarn Dyed
 Weight: 14.50 Ounces Per Linear Yard
 Backing: Light Acrylic
 Finish: Stain Resistant
 Primary Use: Upholstery
 Abrasion: 90,000 (Wyzenbeek)
 FR Rating: California Tech. Bulletin 117
 Cleaning Code: S
 Country of Origin: United States
 Designer: Michael Koch

Net Price:
\$55.00

Discounted Net Price:
\$27.50

815-22 Saffron
815-25 Brass
815-55 Indigo
815-56 Jade
815-64 Patina
815-66 Bronze
815-74 Carnelian



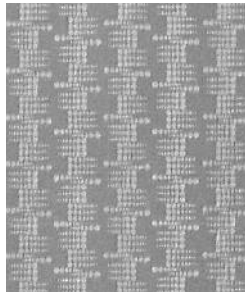
Environmental: This product is a part of HBF Textiles' Environmental Initiatives Program



HBF Textiles

Name Specifications Number/Color Number/Color

TELEPHOTO



Fabric Shown Railroaded



Width: 54"
 Repeat: 14 5/8"V x 3 3/8"H
 Content: 61% Rayon, 39% Polyester
 Yarn Dyed
 Weight: 15.67 Ounces Per Linear Yard
 Finish: Crypton®
 Primary Use: Upholstery
 Abrasion: 102,000 (Wyzenbeek-Wire Mesh)
 FR Rating: California Tech. Bulletin 117
 Cleaning Code: W
 Country of Origin: United States
 Designer: Tracey Reinberg

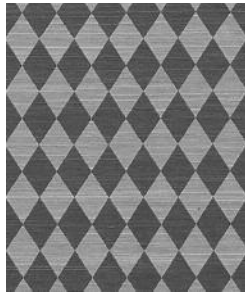


Net Price:
\$49.00

Discounted Net Price:
\$24.50

- 809-25 Glow
- 809-39 Eclipse
- 809-62 Caper
- 809-63 Burnish
- 809-66 Chiffon
- 809-71 Orchid
- 809-74 Piquant
- 809-81 Stainless

TERRACE PAVERS



Width: 54"
 Repeat: 1 1/2"V x 1 1/8"H
 Content: 77% Rayon, 23% Polyester
 Yarn Dyed
 Weight: 11.10 Ounces Per Linear Yard
 Backing: Light Acrylic
 Finish: Stain Resistant
 Primary Use: Upholstery
 Abrasion: 39,000 (Wyzenbeek)
 FR Rating: California Tech. Bulletin 117
 Cleaning Code: S
 Country of Origin: United States
 Designer: Mary Jo Miller



Net Price:
\$66.00

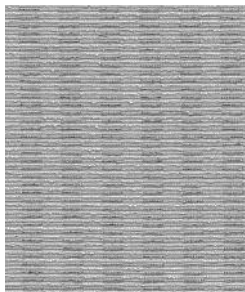
Discounted Net Price:
\$33.00

823-54 Bluestone

- 823-10 Sandstone
- 823-20 Flagstone
- 823-61 Limestone
- 823-75 Marble

Note: Natural variations are inherent in the face of this fabric.

TILED ROOF



Width: 54"
 Repeat: 1/4"V x 1 1/2"H
 Content: 100% Recycled Polyester
 (5% post-consumer,
 95% pre-consumer)
 Yarn Dyed
 Weight: 18.88 Ounces Per Linear Yard
 Primary Use: Upholstery
 Abrasion: 60,000 (Wyzenbeek-Wire Mesh)
 FR Rating: California Tech. Bulletin 117
 Cleaning Code: S
 Country of Origin: United States
 Designer: Mary Jo Miller






Net Price:
\$43.00




- 827-20 Kaolin
- 827-22 Earthen
- 827-39 Mudd
- 827-43 Ceramic
- 827-46 Clay
- 827-54 Slate
- 827-66 Shale
- 827-70 Flagstone

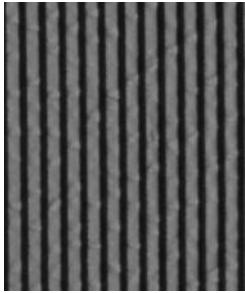

Environmental: This product is a part of HBF Textiles' Environmental Initiatives Program



HBF Textiles

Name	Specifications	Number/Color	Number/Color
<p>TUCKED IN</p>  <p>Fabric Shown Railroaded</p>	<p>Width: 55" Repeat: 4"V Content: 65% Cotton, 19% Polyester, 16% Polyamide (rapidly renewable content) Yarn Dyed</p> <p>Weight: 19.40 Ounces Per Linear Yard Primary Use: Upholstery Abrasion: 99,000 (Wyzenbeek) FR Rating: California Tech. Bulletin 117 NFPA 260 (UFAC) Class 1 Cleaning Code: S Country of Origin: Austria Designer: Laura Guido-Clark</p> <p></p>	<p>Net Price: \$79.50</p> <p>856-11 Bedtime Story 856-20 Warm Milk 856-44 Goodnight Kiss 856-56 Blankie 856-70 Pj's 856-89 Night Light</p>	
	<p>Environmental: This product is a part of HBF Textiles' Environmental Initiatives Program</p>		

<p>VELVET GROUND</p> 	<p>Width: 54" Content: 100% Bamboo (Face), 70% Bamboo, 15% Cotton, 15% Polyester (Back) (rapidly renewable content) Piece Dyed</p> <p>Weight: 27.65 Ounces Per Linear Yard Primary Use: Upholstery Abrasion: 100,000 (Martindale) FR Rating: California Tech. Bulletin 117 Cleaning Code: S Country of Origin: Belgium Designer: Campion Platt</p> <p></p>	<p>Net Price: \$49.00</p> <p>872-10 Snow 872-20 Sandstone 872-22 Glow 872-37 Flint 872-54 Dusk 872-62 Moss 872-77 Clematis 872-80 Fox</p>	
	<p>Environmental: This product is a part of HBF Textiles' Environmental Initiatives Program</p>		
<p>Note: Pile of this product is intended to be crushed and is inherent to the product design.</p>			

<p>VICTOR</p>  <p>Fabric Shown Railroaded</p>	<p>Width: 54" Repeat: 1/2"V Content: 42% Polyester, 37% Cotton, 21% Rayon Yarn Dyed</p> <p>Weight: 12.47 Ounces Per Linear Yard Primary Use: Upholstery Abrasion: 45,000 (Wyzenbeek) FR Rating: California Tech. Bulletin 117 Cleaning Code: S Country of Origin: United States Designer: Mary Jo Miller</p> <p></p>	<p>Net Price: \$46.00</p> <p>839-31 Brass</p>	<p>Discounted Net Price: \$23.00</p> <p>839-20 Sisal 839-25 Terrazzo 839-36 Shade 839-37 Shell 839-56 Frieze 839-58 Neon 839-66 Palm 839-85 Ocean Drive 839-90 Photograph</p>
---	---	--	--

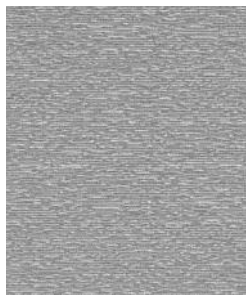
HBF Textiles

Name	Specifications	Number/Color	Number/Color
VIS - À - VIS	Width: 54"	Net Price: \$52.00	Discounted Net Price: \$26.00
	Content: 100% Polyester (Face) 65% Polyester, 35% Cotton (Back) (12% pre-consumer)		
	Weight: 14.00 Ounces Per Linear Yard	822-11 Coconut	822-10 Cream
	Primary Use: Upholstery, Direct Glue Wallcovering	822-16 Linen	822-55 Marlin
	Abrasion: 100,000 (Wyzenbeek Wire Mesh)	822-20 Sesame	822-70 Lavender
	FR Rating: California Tech. Bulletin 117	822-23 Cork	822-75 Cranberry
	Cleaning Code: SW	822-30 Henna	
	Country of Origin: China	822-35 Loam	
		822-36 Acorn	
		822-37 Gravel	
		822-43 Bittersweet	
		822-46 Pumpkin	
		822-67 Juniper	
		822-68 Moss	
		822-90 Licorice	

Environmental: PVC Free, meets CA 01350 VOC standards.
Antimicrobial.
This product is a part of HBF Textiles' Environmental Initiatives Program



WAVELENGTH

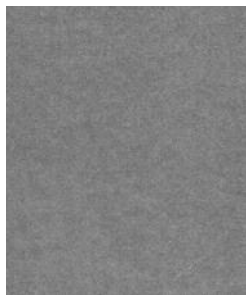


 CRYPTON® Super Fabrics

Width: 54"	Content: 56% Polyester, 44% Cotton Yarn Dyed	Net Price: \$54.00	Discounted Net Price: \$27.00
Weight: 16.84 Ounces Per Linear Yard		812-23 Sand	812-40 Tart
Finish: Crypton®		812-25 Glow	812-46 Watermelon
Primary Use: Upholstery, Direct Glue Wallcovering		812-45 Flame	812-63 Burnish
Abrasion: 50,000 (Wyzenbeek-Wire Mesh)		812-54 Ocean	
FR Rating: California Tech. Bulletin 117		812-61 Pistachio	
Cleaning Code: W		812-66 Chiffon	
Country of Origin: United States		812-71 Orchid	
Designer: Tracey Reinberg		812-77 Fig	
		812-81 Stainless	
		812-87 Mushroom	



WHITEHALL ALPACA



Width: 54"	Content: 100% Alpaca (Face), 58% Cotton, 42% Alpaca (Back) (rapidly renewable content) Piece Dyed	Net Price: \$88.00	Discounted Net Price: \$44.00
Weight: 22.10 Ounces Per Linear Yard		683-13 Camel Hair	
Primary Use: Upholstery		683-20 Palomino	
Abrasion: 102,000 (Wyzenbeek)		683-23 English Toffee	
FR Rating: California Tech. Bulletin 117		683-33 English Cherry	
Cleaning Code: W		683-66 British Khaki	
Country of Origin: Belgium		683-74 Oxblood	
Designer: Barbara Barry		683-82 Thames	



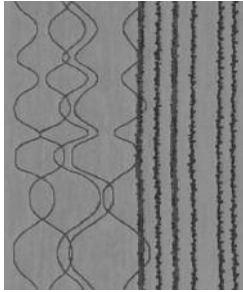
Environmental: This product is a part of HBF Textiles' Environmental Initiatives Program



HBF Textiles

Name Specifications Number/Color Number/Color

WIGGLE ROOM



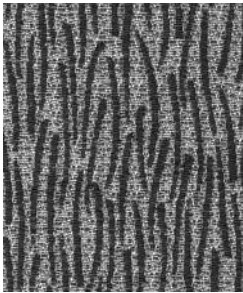
Fabric Shown Railroaded

Width: 54"
 Repeat: 11"V x 14"H
 Content: 47% Cotton, 37% Polyester,
 9% Olefin, 7% Rayon
 Yarn Dyed
 Weight: 15.75 Ounces Per Linear Yard
 Backing: Light Acrylic
 Finish: Stain Resistant
 Primary Use: Upholstery
 Abrasion: 45,000 (Wyzenbeek)
 FR Rating: California Tech. Bulletin 117
 NFPA 260 (UFAC) Class 1
 Cleaning Code: S
 Country of Origin: United States
 Designer: Laura Guido-Clark

Net Price:
\$49.00
857-10 Lunch Room
857-20 Pantyhose
857-22 Stretch Pants
857-39 Shakey Ground
857-44 Gummy Worms
857-45 Jello
857-56 Coach Sets
857-63 Slime
857-70 Tube Top
857-89 Sweat Suit



WOODLAND TRACE



Width: 54"
 Repeat: 9 1/8"V x 13 1/2"H
 Content: 57% Recycled Polyester,
 43% Polyester
 (57% post-consumer)
 Yarn Dyed
 Weight: 12.09 Ounces Per Linear Yard
 Primary Use: Upholstery
 Abrasion: 112,000 (Wyzenbeek)
 FR Rating: California Tech. Bulletin 117
 NFPA 260 (UFAC) Class 1
 ASTM E-84 Unadhered Class A
 Cleaning Code: S
 Country of Origin: United States
 Designer: Campion Platt

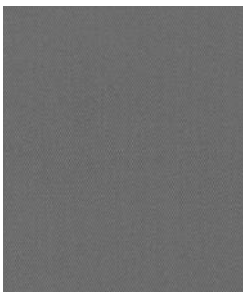
Net Price:
\$37.00
877-20 Sandstone
877-45 Nectar
877-60 Fern
877-64 Rain
877-70 Thistle
877-81 Ash



Environmental: This product is a part of HBF Textiles' Environmental Initiatives Program



WOOL TWILL



Width: 54"
 Content: 100% Lambswool
 (rapidly renewable content)
 Piece Dyed
 Weight: 15.00 Ounces Per Linear Yard
 Primary Use: Upholstery, Drapery, Upholstered Walls
 Abrasion: 33,000 (Wyzenbeek)
 FR Rating: California Technical Bulletin 117
 NFPA 701 Small Scale (Class A)
 ASTM E-84 Unadhered (Class A)
 Cleaning Code: S
 Country of Origin: England
 Designer: Barbara Barry

Net Price:
\$66.50
125-11 Ostrich Egg
125-37 Malted
125-39 Darjeeling

Discounted Net Price:
\$33.25
125-20 Parchment
125-23 Vicuna
125-43 Lacquer
125-60 Lawn
125-61 Green Tea
125-64 Mercury Glass



Environmental: This product is a part of HBF Textiles' Environmental Initiatives Program



